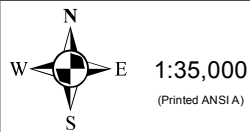
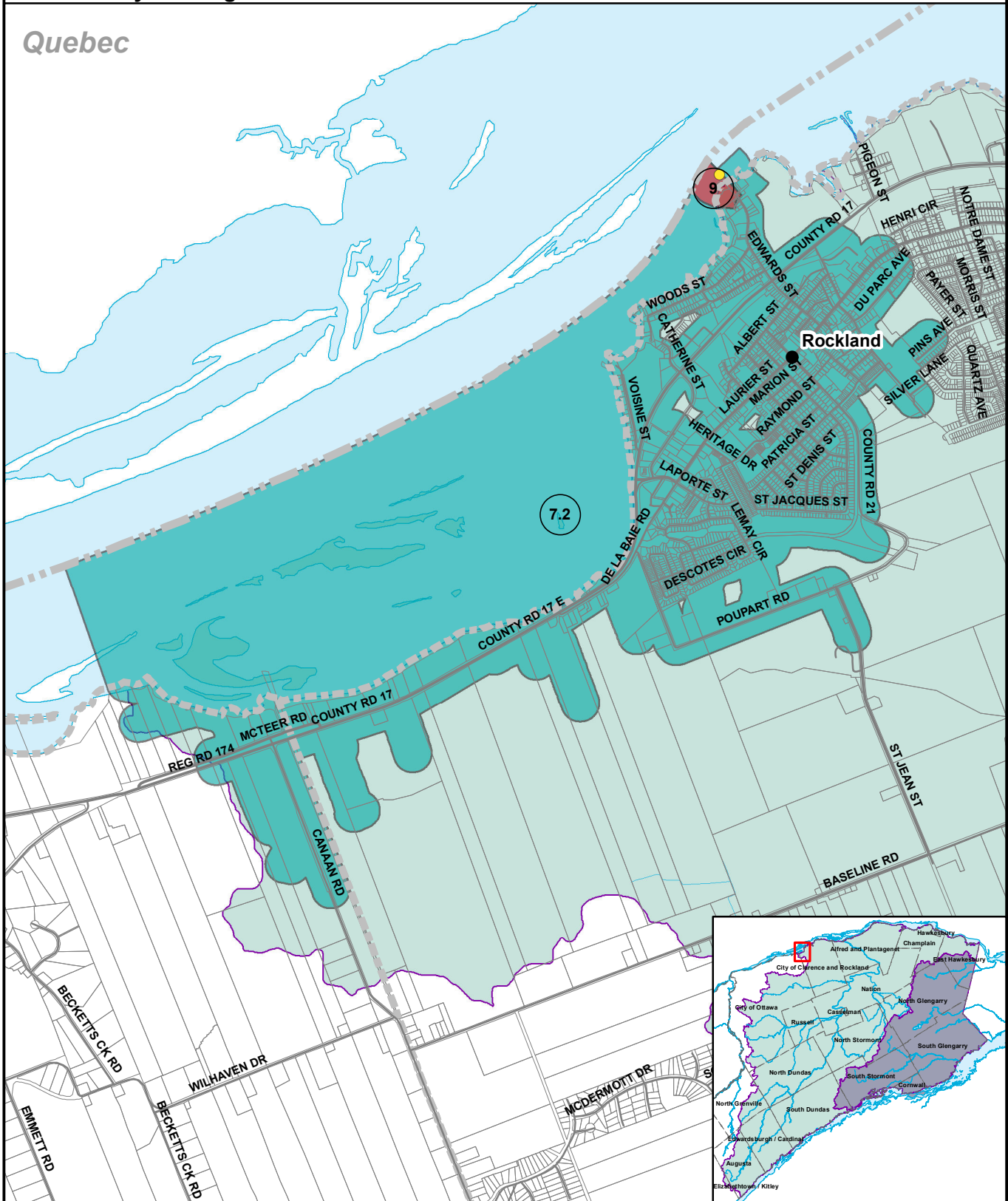


Quebec



This map is intended to accompany the Assessment Report and may be subject to change. Please consult the local Conservation Authority for the latest version and assistance with proper interpretation.

Base data is provided by the Ontario Ministry of Natural Resources. Produced by the South Nation River Conservation Authority under license.

Copyright © Queen's Printer for Ontario, 2012.

- | | | |
|--------------------|------------------------|--------------------------|
| ● Villages/Towns | ▭ Property Boundary | ● IPZ-1 |
| — Railway Tracks | ▭ Municipal Boundary | ● IPZ-2 |
| — Primary Roads | ▭ Raisin Region SPA | ● IPZ-3a (If Applicable) |
| — Secondary Roads | ▭ South Nation SPA | ● IPZ-3b (If Applicable) |
| — Other Roads | ● Surface Water Intake | ● IPZ-3c (If Applicable) |
| — Rivers and Lakes | | |



Raisin Region Conservation Authority
Office de protection de la nature de la région Raisin

SOUTH NATION CONSERVATION DE LA NATION SUD

