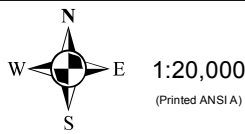
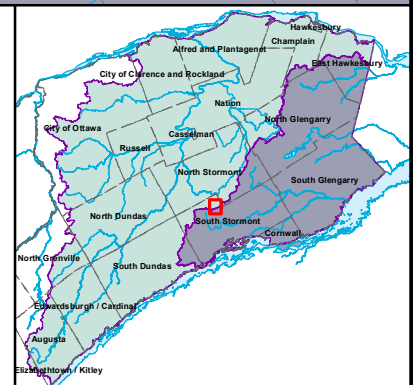


Applicable Provincial Circumstance Tables for DNAPL Threats

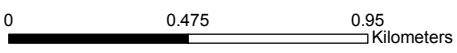
Vulnerable Area	Provincial Circumstance Table Number (Table Name)		
	Significant	Moderate	Low
WHPA-A	9 (DWAS)	n.a.	n.a.
WHPA-B	9 (DWAS)	n.a.	n.a.
WHPA-C	9 (DWAS)	n.a.	n.a.
WHPA-D	n.a.	10 (DW6M)	11 (DW6L)

DNAPL threats are Significant in WHPA-A, B and C regardless of Vulnerability Score.
 DNAPL Threats can be Moderate or Low in WHPA-D with a Vulnerability Score of 6.



Legend

- Villages/Towns
- Railway Tracks
- Primary Roads
- Secondary Roads
- Other Roads
- Rivers and Lakes
- Property Boundary
- Municipal Boundary
- Raisin Region SPA
- South Nation SPA
- Wellhead



This map is intended to accompany the Assessment Report and may be subject to change. Please consult the local Conservation Authority for the latest version and assistance with proper interpretation.
 Base data is provided by the Ontario Ministry of Natural Resources. Produced by the South Nation River Conservation Authority under license.
 Copyright © Queen's Printer for Ontario, 2012.